



The first Inverse-Scattering-Series internal multiple *elimination* method for a *multi*-dimensional subsurface

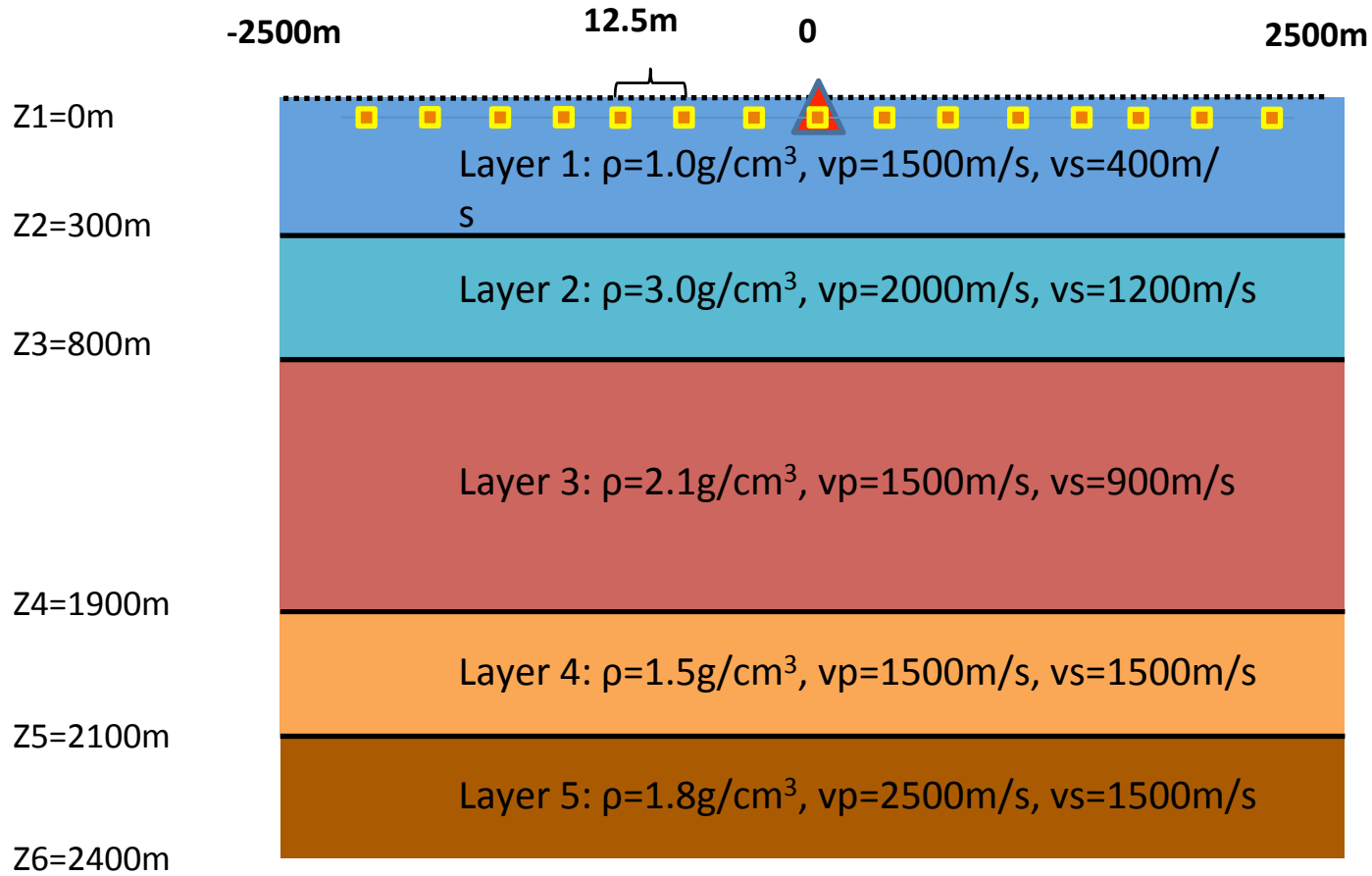
Yanglei Zou* Chao Ma and Arthur B. Weglein

June, 2016

Numerical test for elastic PP data in a layered
model

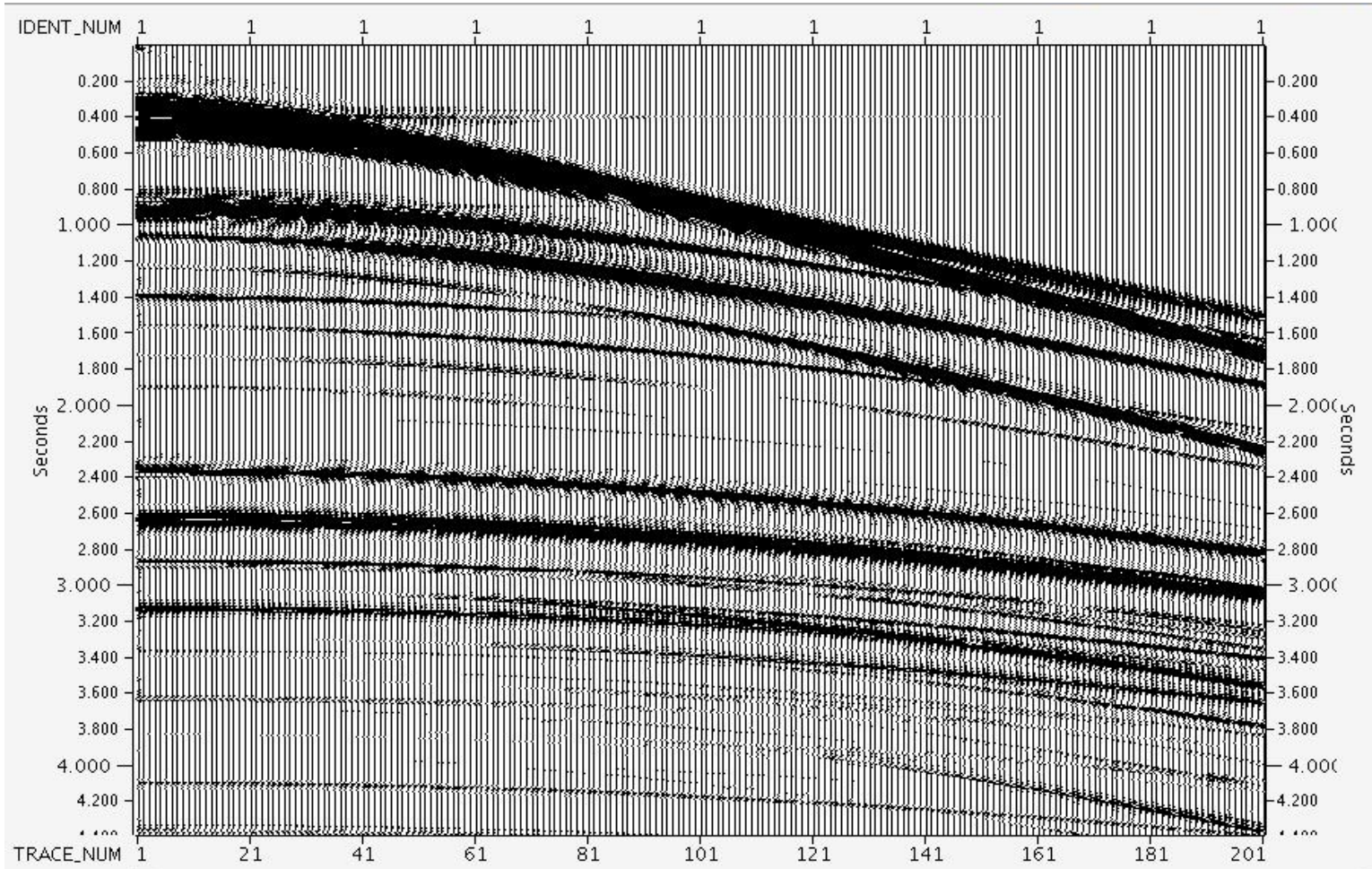
ISS internal multiple **elimination** in an **elastic** earth (model)

Courtesy of Schlumberger De-multiples Team



Yanglei Zou et al. (2015)

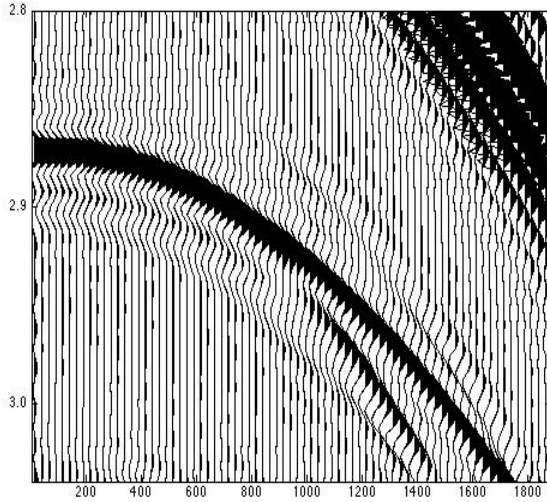
ISS internal multiple **elimination** in an **elastic** earth (data)



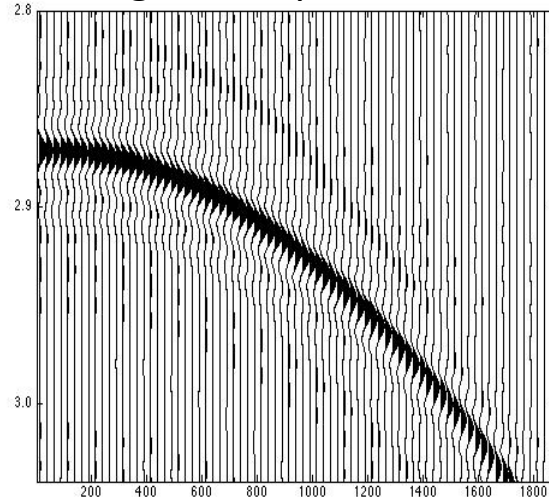
Yanglei Zou et al. (2015)

ISS internal multiple **elimination** in an **elastic** earth

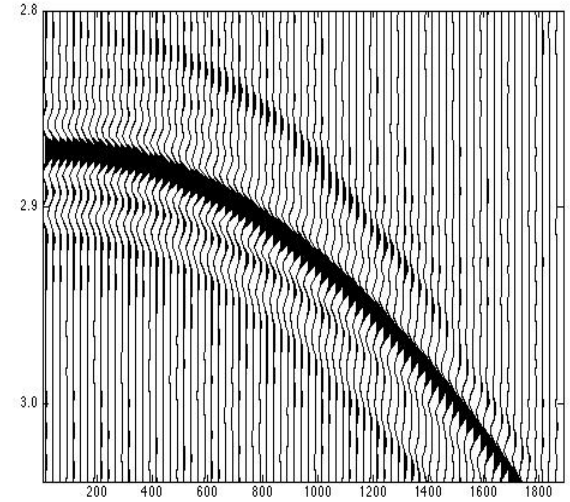
1. Input data (2.8s-3.1s)



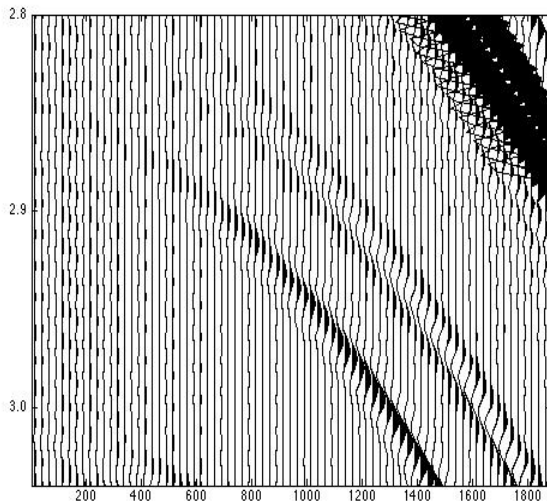
2. internal multiple attenuation algorithm prediction



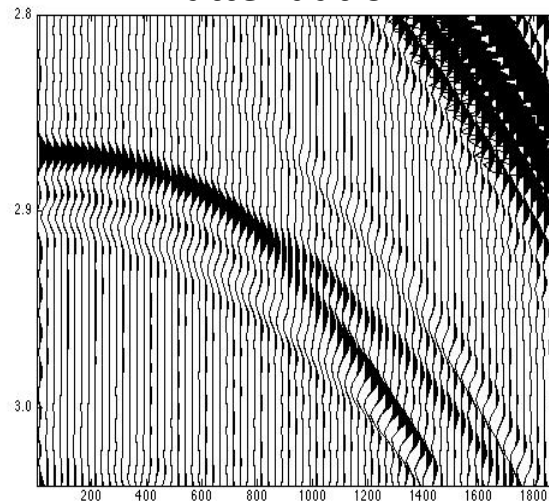
3. internal multiple elimination algorithm prediction



4. primaries in the data



5. data after internal multiple attenuation



6. data after internal multiple elimination

